

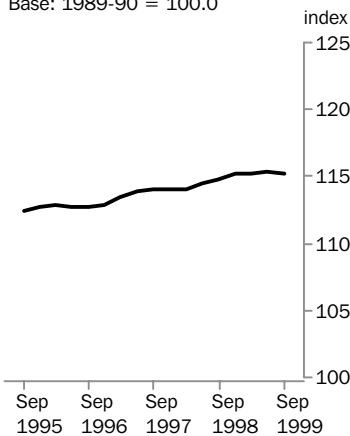
**PRICE INDEX OF MATERIALS  
USED IN BUILDING OTHER  
THAN HOUSE BUILDING**

SIX  
STATE  
CAPITAL  
CITIES

EMBARGO: 11:30AM (CANBERRA TIME) THURS 21 OCT 1999

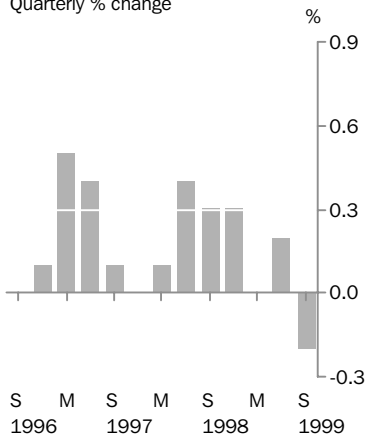
**All groups**

Base: 1989-90 = 100.0



**All groups**

Quarterly % change



**SEPTEMBER QTR KEY FIGURES**

	<b>% change Jun Qtr 1999 to Sep Qtr 1999</b>	<b>% change Sep Qtr 1998 to Sep Qtr 1999</b>
<b>Weighted average of six State capital cities</b>	<b>-0.2</b>	<b>0.3</b>
Sydney	-0.3	0.1
Melbourne	-0.3	0.9
Brisbane	0.3	0.9
Adelaide	-0.3	-0.1
Perth	0.3	0.2
Hobart	0.2	0.1

**SEPTEMBER QTR KEY POINTS**

**WEIGHTED AVERAGE INDEX**

- Price decreases for reinforcing steel bar, structural steel and ready mixed concrete were the main contributors to the decrease in the index.
- Price rises for elevators, escalators and travelators and plastic pipes and fittings partly offset the decrease.

**CAPITAL CITIES INDEXES**

- Prices for reinforcing steel bar decreased in all cities except Hobart.
- Structural steel prices decreased in Sydney, Melbourne and Perth, increased in Brisbane and Hobart and remained unchanged in Adelaide.
- Prices for ready mixed concrete decreased in all cities except Brisbane and Hobart which recorded increases.
- Elevator, escalator and travelator prices increased in all cities.
- Prices for plastic pipes and fittings rose in all cities.

- For further information about these and related statistics, contact Robert Adams on Canberra 02 6252 6198, or Client Services in any ABS office shown on the back cover of this publication.

# NOTES

## FORTHCOMING ISSUES

*ISSUE (Quarter)*

*RELEASE DATE*

December 1999

21 January 2000

March 2000

20 April 2000



## CHANGES IN THIS ISSUE

There are no changes in this issue.



## RELATED STATISTICS

For more information about the statistics in this publication and the availability of related unpublished statistics, contact Robert Adams on fax (02) 6252 7060, or email [robert.adams@abs.gov.au](mailto:robert.adams@abs.gov.au).



W. McLennan  
Australian Statistician

## ALL GROUPS INDEXES, Index Numbers(a)

<i>Period</i>	<i>Weighted average of six State capital cities</i>	<i>Sydney</i>	<i>Melbourne</i>	<i>Brisbane</i>	<i>Adelaide</i>	<i>Perth</i>	<i>Hobart</i>
<b>1995-1996</b>	112.7	112.6	111.1	115.0	112.7	113.2	115.1
<b>1996-1997</b>	113.2	113.1	110.9	115.9	114.1	114.6	116.3
<b>1997-1998</b>	114.2	114.4	111.4	117.2	115.1	114.6	117.4
<b>1998-1999</b>	115.2	115.2	113.2	118.4	115.5	114.1	118.5
<b>1995</b>							
September	112.4	112.4	110.6	115.2	112.4	112.7	114.8
December	112.7	112.7	111.2	115.0	112.5	113.1	115.3
<b>1996</b>							
March	112.8	112.6	111.4	115.0	112.8	113.4	115.2
June	112.7	112.5	111.3	114.9	112.9	113.5	115.2
September	112.7	112.5	110.8	115.2	113.1	114.0	115.8
December	112.8	112.6	110.4	115.5	114.1	114.3	116.1
<b>1997</b>							
March	113.4	113.2	111.1	116.1	114.5	114.9	116.5
June	113.9	113.9	111.3	116.9	114.7	115.2	116.7
September	114.0	114.2	111.2	117.5	114.8	115.3	116.5
December	114.0	114.2	111.3	117.0	115.1	114.8	117.2
<b>1998</b>							
March	114.1	114.4	111.4	117.0	115.0	114.2	117.7
June	114.5	114.8	111.8	117.3	115.6	114.2	118.1
September	114.8	115.0	112.4	117.8	115.3	114.2	118.4
December	115.2	115.1	113.2	118.7	115.6	114.2	118.6
<b>1999</b>							
March	115.2	115.2	113.3	118.6	115.6	113.9	118.5
June	115.4	115.4	113.7	118.6	115.6	114.1	118.3
September	115.2	115.1	113.4	118.9	115.2	114.4	118.5

(a) Base of each index: 1989-90 = 100.0

## ALL GROUPS INDEXES, Percentage Changes

<i>Period</i>	<i>Weighted average of six State capital cities</i>	<i>Sydney</i>	<i>Melbourne</i>	<i>Brisbane</i>	<i>Adelaide</i>	<i>Perth</i>	<i>Hobart</i>
PERCENTAGE CHANGE (from previous year)							
<b>1995-1996</b>	2.1	2.1	2.0	1.9	1.6	2.8	2.6
<b>1996-1997</b>	0.4	0.4	-0.2	0.8	1.2	1.2	1.0
<b>1997-1998</b>	0.9	1.1	0.5	1.1	0.9	0.0	0.9
<b>1998-1999</b>	0.9	0.7	1.6	1.0	0.3	-0.4	0.9
PERCENTAGE CHANGE (from corresponding quarter of previous year)							
<b>1995</b>							
September	2.9	3.1	2.5	3.5	2.6	3.6	3.5
December	2.5	2.7	2.4	2.4	1.8	3.5	3.3
<b>1996</b>							
March	1.7	1.6	1.8	1.3	1.0	2.5	2.5
June	1.0	0.8	1.5	0.4	0.9	1.6	1.2
September	0.3	0.1	0.2	0.0	0.6	1.2	0.9
December	0.1	-0.1	-0.7	0.4	1.4	1.1	0.7
<b>1997</b>							
March	0.5	0.5	-0.3	1.0	1.5	1.3	1.1
June	1.1	1.2	0.0	1.7	1.6	1.5	1.3
September	1.2	1.5	0.4	2.0	1.5	1.1	0.6
December	1.1	1.4	0.8	1.3	0.9	0.4	0.9
<b>1998</b>							
March	0.6	1.1	0.3	0.8	0.4	-0.6	1.0
June	0.5	0.8	0.4	0.3	0.8	-0.9	1.2
September	0.7	0.7	1.1	0.3	0.4	-1.0	1.6
December	1.1	0.8	1.7	1.5	0.4	-0.5	1.2
<b>1999</b>							
March	1.0	0.7	1.7	1.4	0.5	-0.3	0.7
June	0.8	0.5	1.7	1.1	0.0	-0.1	0.2
September	0.3	0.1	0.9	0.9	-0.1	0.2	0.1
PERCENTAGE CHANGE (from previous quarter)							
<b>1995</b>							
September	0.7	0.7	0.8	0.7	0.4	0.9	0.9
December	0.3	0.3	0.5	-0.2	0.1	0.4	0.4
<b>1996</b>							
March	0.1	-0.1	0.2	0.0	0.3	0.3	-0.1
June	-0.1	-0.1	-0.1	-0.1	0.1	0.1	0.0
September	0.0	0.0	-0.4	0.3	0.2	0.4	0.5
December	0.1	0.1	-0.4	0.3	0.9	0.3	0.3
<b>1997</b>							
March	0.5	0.5	0.6	0.5	0.4	0.5	0.3
June	0.4	0.6	0.2	0.7	0.2	0.3	0.2
September	0.1	0.3	-0.1	0.5	0.1	0.1	-0.2
December	0.0	0.0	0.1	-0.4	0.3	-0.4	0.6
<b>1998</b>							
March	0.1	0.2	0.1	0.0	-0.1	-0.5	0.4
June	0.4	0.3	0.4	0.3	0.5	0.0	0.3
September	0.3	0.2	0.5	0.4	-0.3	0.0	0.3
December	0.3	0.1	0.7	0.8	0.3	0.0	0.2
<b>1999</b>							
March	0.0	0.1	0.1	-0.1	0.0	-0.3	-0.1
June	0.2	0.2	0.4	0.0	0.0	0.2	-0.2
September	-0.2	-0.3	-0.3	0.3	-0.3	0.3	0.2

## ALL GROUPS INDEX(a), Contribution of Major Building Materials

Category	June Qtr 1999	September Qtr 1999	Change
<b>Weighted average of six State capital cities</b>	<b>115.4</b>	<b>115.2</b>	<b>-0.2</b>
GROUPS: Contribution to Weighted Average of six State capital cities index (index points)			
Structural timber	0.86	0.87	0.01
Joinery products	4.68	4.71	0.03
Clay bricks	1.69	1.68	-0.01
Ready mixed concrete	10.01	9.94	-0.07
Precast concrete products	4.19	4.23	0.04
Plaster and plaster products	1.69	1.70	0.01
Steel decking and cladding	3.34	3.31	-0.03
Structural steel	9.66	9.46	-0.20
Reinforcing steel bar, fabric and mesh	7.45	7.18	-0.27
Aluminium windows	6.39	6.41	0.02
Aluminium screens, doors and louvres	1.96	1.96	0.00
Suspended ceilings and access floors	1.15	1.15	0.00
Fabricated steel products	3.88	3.86	-0.02
Builders' hardware	1.46	1.51	0.05
Elevators, escalators and travelators	6.30	6.37	0.07
Sand and aggregate	0.14	0.14	0.00
Carpet	2.67	2.67	0.00
Paint and other coatings	1.25	1.25	0.00
Non-ferrous pipes and fittings	1.98	1.99	0.01
Conductors	2.19	2.19	0.00
Swichboards and switchgear	2.32	2.33	0.01
Lamps and light fittings	2.30	2.30	0.00
Fire protection	3.55	3.56	0.01
Air conditioning equipment excluding piping and electrical materials	10.17	10.17	0.00

(a) For an explanation of this table see paragraph 18 of the Explanatory Notes

## SELECTED ANZSIC GROUPS, Index Numbers(a)

## WEIGHTED AVERAGE OF SIX STATE CAPITAL CITIES.....

Period	Wood and wood products (231-232)	Ceramics (262)	Cement, plaster and concrete products (263)	Iron and steel products (271)	Structural metal products (274)	Sheet metal products (275)	Fabricated metal products (276)	Electrical equipment and appliances (285)	Industrial machinery and equipment (286)	Other materials	All groups
<b>1995-1996</b>	114.6	111.4	110.6	116.0	109.9	117.3	121.6	117.2	110.4	114.4	112.7
<b>1996-1997</b>	115.5	112.2	110.5	117.7	111.1	119.0	124.3	114.4	110.8	114.8	113.2
<b>1997-1998</b>	117.6	115.8	112.3	119.5	112.0	120.4	125.7	114.1	110.7	115.1	114.2
<b>1998-1999</b>	119.1	117.5	113.0	120.3	112.2	120.4	125.9	115.3	115.3	114.8	115.2
<b>1995</b>											
September	114.9	111.6	111.7	114.6	109.2	116.9	120.7	117.3	108.8	114.4	112.4
December	114.3	111.7	110.9	114.6	110.1	117.0	121.3	117.4	110.2	114.5	112.7
<b>1996</b>											
March	114.4	111.7	110.2	117.6	110.1	117.5	121.5	117.4	110.7	114.2	112.8
June	114.7	110.6	109.4	117.2	110.0	117.8	123.0	116.7	111.7	114.5	112.7
September	115.2	111.1	109.6	116.0	110.4	117.4	122.8	114.1	112.0	114.5	112.7
December	114.9	111.6	110.0	116.1	111.0	118.4	124.0	113.7	110.8	114.2	112.8
<b>1997</b>											
March	115.5	112.8	110.7	118.7	111.3	119.6	124.9	114.8	110.3	114.9	113.4
June	116.2	113.2	111.6	120.0	111.8	120.4	125.6	115.1	110.0	115.5	113.9
September	116.7	114.1	111.7	119.8	111.7	120.5	125.8	115.5	109.9	115.7	114.0
December	117.4	115.4	111.8	119.7	112.1	120.3	125.9	114.1	110.2	115.1	114.0
<b>1998</b>											
March	118.4	116.7	112.4	119.4	112.0	120.4	125.6	113.2	110.6	114.7	114.1
June	118.0	117.1	113.2	119.2	112.1	120.4	125.3	113.6	112.0	115.0	114.5
September	118.7	117.2	113.2	120.0	112.1	121.2	125.5	113.9	112.9	115.4	114.8
December	119.3	116.9	113.0	120.5	112.4	120.9	125.8	115.0	115.9	114.3	115.2
<b>1999</b>											
March	119.4	117.4	112.9	120.5	112.2	119.6	125.8	115.9	116.1	114.3	115.2
June	119.0	118.3	113.0	120.3	112.2	119.7	126.3	116.3	116.2	115.3	115.4
September	119.8	118.1	112.9	119.4	110.4	120.4	128.1	116.5	116.6	116.0	115.2

(a) Base of each index: 1989-90 = 100.0

## SELECTED BUILDING MATERIALS, Index Numbers(a)

WEIGHTED AVERAGE OF SIX STATE CAPITAL CITIES.....

<i>Period</i>	<i>Structural timber</i>	<i>Hardwood</i>	<i>Softwood</i>	<i>Plywood and board</i>	<i>Joinery products</i>	<i>Ceramic sanitary- ware</i>	<i>Ceramic tiles</i>	<i>Clay bricks</i>	<i>Cement</i>	<i>Ready mixed concrete</i>
<b>1995-1996</b>	120.5	121.7	127.8	111.0	113.4	127.5	102.5	110.0	113.9	108.2
<b>1996-1997</b>	116.4	118.6	123.2	108.2	116.1	135.9	99.8	108.7	116.3	106.6
<b>1997-1998</b>	121.7	121.6	129.2	109.0	118.0	143.8	97.6	114.6	117.2	107.2
<b>1998-1999</b>	125.4	126.8	133.0	108.7	119.6	142.6	98.0	119.1	118.4	106.3
<b>1995</b>										
September	124.7	123.9	132.6	113.0	112.6	125.4	102.2	112.1	111.2	110.6
December	120.9	122.6	128.1	110.7	113.0	127.5	102.9	110.5	113.0	109.0
<b>1996</b>										
March	119.5	121.0	126.7	110.6	113.4	128.4	103.1	109.7	115.4	107.4
June	117.0	119.2	123.8	109.8	114.6	128.7	101.9	107.6	116.0	105.9
September	116.1	117.6	123.0	108.8	115.6	131.5	101.2	107.6	116.0	105.8
December	115.0	116.8	121.8	107.2	115.8	134.0	100.2	108.1	116.0	106.0
<b>1997</b>										
March	116.5	119.9	123.2	107.8	116.2	138.6	99.7	108.6	116.3	107.1
June	118.0	120.1	124.9	108.9	116.7	139.5	97.9	110.4	116.8	107.5
September	119.6	120.4	126.8	108.6	117.1	139.6	98.0	112.7	116.3	107.5
December	119.9	120.8	127.2	108.9	118.1	144.2	97.9	112.7	117.2	107.2
<b>1998</b>										
March	123.0	121.5	130.9	109.8	118.7	146.1	97.3	115.5	117.4	106.9
June	124.1	123.7	131.8	108.8	118.2	145.1	97.2	117.3	117.9	107.0
September	125.8	125.2	133.7	108.7	118.9	143.3	98.0	117.9	117.9	107.0
December	126.2	127.5	133.8	108.5	119.8	142.0	97.7	118.4	118.9	106.6
<b>1999</b>										
March	125.9	127.5	133.4	108.8	119.9	142.0	98.2	119.3	118.0	105.9
June	123.8	126.8	130.9	108.6	119.7	143.1	98.2	120.6	118.6	105.7
September	124.6	129.9	131.3	110.0	120.3	143.9	97.9	120.0	118.6	104.9

(a) Base of each index: 1989-90 = 100.0

SELECTED BUILDING MATERIALS, Index Numbers(a) *continued*

WEIGHTED AVERAGE OF SIX STATE CAPITAL CITIES.....

<i>Period</i>	<i>Precast concrete products</i>	<i>Concrete masonry blocks</i>	<i>Plaster and plaster products</i>	<i>Fibrous cement products</i>	<i>Steel decking and cladding</i>	<i>Cast iron pipes and products</i>	<i>Structural steel</i>	<i>Reinforcing steel bar, fabric and mesh</i>	<i>Aluminium windows</i>	<i>Aluminium screens, doors, louvres</i>
<b>1995-1996</b>	115.0	112.8	114.9	120.5	110.9	132.4	109.3	112.0	108.4	114.8
<b>1996-1997</b>	117.5	114.1	116.3	122.7	112.9	132.8	112.5	111.6	108.5	115.7
<b>1997-1998</b>	120.7	120.3	119.9	124.2	114.9	132.7	113.1	112.7	109.0	116.1
<b>1998-1999</b>	123.8	127.0	122.5	122.3	114.4	135.4	113.4	109.9	110.5	119.1
<b>1995</b>										
September	114.3	112.3	114.7	120.6	109.5	131.9	106.9	112.9	108.7	114.8
December	115.0	111.7	114.7	120.6	109.0	131.6	109.7	112.7	108.5	114.7
<b>1996</b>										
March	115.3	113.3	114.4	120.6	112.8	133.1	110.2	111.9	108.3	114.9
June	115.3	114.0	115.6	120.3	112.3	132.9	110.5	110.5	108.1	114.9
September	116.2	113.9	115.7	122.4	111.2	132.3	111.2	110.9	108.0	114.9
December	117.2	113.5	115.7	122.7	110.9	132.5	112.7	111.1	108.6	115.0
<b>1997</b>										
March	117.9	113.6	115.7	122.7	114.1	132.9	113.1	111.4	108.5	115.6
June	118.8	115.2	118.1	123.1	115.5	133.5	112.9	112.9	108.7	117.1
September	119.3	116.0	118.5	123.5	115.4	133.5	112.9	113.2	108.5	115.4
December	119.2	116.1	120.7	124.2	115.2	133.6	113.6	112.7	109.0	115.1
<b>1998</b>										
March	120.7	123.6	120.1	124.9	114.5	131.9	112.9	112.7	108.8	116.1
June	123.4	125.4	120.4	124.3	114.3	131.9	112.8	112.1	109.8	117.6
September	123.4	125.9	120.4	123.4	114.7	135.4	113.3	110.7	109.8	117.6
December	123.3	126.1	122.2	122.7	114.5	135.6	113.2	110.6	110.5	120.2
<b>1999</b>										
March	124.6	126.9	122.7	120.6	114.3	135.3	113.5	109.6	110.5	119.3
June	124.0	128.9	124.5	122.3	114.1	135.3	113.6	108.8	111.1	119.4
September	125.2	129.1	125.5	122.5	113.2	137.2	111.3	104.8	111.5	118.9

(a) Base of each index: 1989-90 = 100.0



SELECTED BUILDING MATERIALS, Index Numbers(a) *continued*

## WEIGHTED AVERAGE OF SIX STATE CAPITAL CITIES.....

Period	Suspended ceilings and access floors	Fabricated steel products	Sheet steel sanitary-ware	Builders' hardware	Sand and aggregate	Carpet	Paint and other coatings	Glass products	Non-ferrous pipes and fittings	Plastic floor coverings
<b>1995-1996</b>	105.3	111.9	121.6	119.5	119.1	102.6	129.1	110.2	129.4	119.9
<b>1996-1997</b>	105.7	114.6	122.1	118.3	119.5	103.3	135.7	112.9	128.8	114.3
<b>1997-1998</b>	106.1	116.2	121.0	120.0	121.0	103.0	136.0	110.2	135.6	113.3
<b>1998-1999</b>	109.5	117.7	118.3	123.4	121.9	102.3	142.7	111.1	128.6	116.4
<b>1995</b>										
September	104.6	110.9	121.5	119.2	120.5	101.1	127.5	109.6	129.7	119.5
December	104.5	111.4	121.5	119.2	118.6	102.4	128.1	109.8	128.9	120.1
<b>1996</b>										
March	106.0	111.9	121.6	118.9	118.7	103.2	129.4	109.8	128.4	121.1
June	106.2	113.2	121.9	120.5	118.4	103.6	131.3	111.7	130.5	118.9
September	106.1	114.1	122.2	119.2	118.4	103.0	135.8	112.3	128.7	115.6
December	106.1	114.0	122.2	117.7	118.7	103.1	136.3	113.1	125.6	114.5
<b>1997</b>										
March	105.8	115.0	121.8	118.0	120.1	103.3	135.5	113.1	129.4	113.5
June	104.9	115.1	122.2	118.3	120.9	103.7	135.0	113.1	131.4	113.5
September	104.9	115.8	122.3	118.7	121.0	103.2	135.3	113.1	134.5	113.7
December	105.3	116.3	121.2	119.0	121.1	102.2	135.7	109.0	138.0	113.7
<b>1998</b>										
March	106.4	116.5	120.5	120.8	121.2	103.5	135.4	108.4	135.4	112.4
June	107.6	116.1	120.1	121.5	120.7	103.0	137.7	110.4	134.6	113.3
September	108.8	117.4	118.7	122.2	121.7	103.3	138.5	110.7	134.0	116.5
December	110.2	117.6	120.5	122.9	121.7	102.5	143.2	110.8	126.7	116.3
<b>1999</b>										
March	109.6	117.7	116.9	123.5	122.2	101.8	144.2	110.7	126.8	116.4
June	109.3	118.1	117.0	124.9	122.0	101.5	144.8	112.0	126.8	116.4
September	109.2	117.6	117.3	128.8	122.1	101.5	145.5	112.7	127.8	116.0

(a) Base of each index: 1989-90 = 100.0

## SELECTED MAJOR BUILDING MATERIALS, Index Numbers(a)—Sydney and Melbourne

Period	Structural timber	Clay bricks	Ready mixed concrete	Precast concrete products	Steel decking and cladding	Structural steel	Reinforcing steel bar fabric and mesh	Aluminium windows	Fabricated steel products	Builders hardware	Sand and aggregate	Carpet	Paint and other coatings	Non-ferrous pipes and fittings
SYDNEY														
<b>1995-1996</b>	121.5	102.8	99.2	112.3	112.4	110.0	120.6	109.3	109.7	123.2	113.8	103.5	124.9	136.2
<b>1996-1997</b>	118.0	98.3	97.9	115.0	114.9	112.6	120.2	109.8	112.6	118.1	113.5	104.2	132.0	137.7
<b>1997-1998</b>	124.8	107.4	98.7	117.8	117.6	112.6	124.2	110.7	113.3	120.2	116.1	101.6	133.6	148.5
<b>1998-1999</b>	129.7	115.5	97.6	119.2	117.4	112.4	122.6	113.6	113.3	124.2	117.1	101.8	141.8	135.4
<b>1995</b>														
September	127.1	105.1	100.7	111.6	111.7	108.2	121.0	109.9	108.4	121.9	116.8	101.3	123.8	135.3
December	121.6	104.4	100.2	112.5	110.8	110.5	121.1	109.4	108.7	122.3	112.9	102.8	123.1	135.6
<b>1996</b>														
March	120.0	103.4	98.5	112.7	113.6	110.7	120.4	108.9	109.8	122.4	113.2	104.7	125.0	135.6
June	117.3	98.1	97.4	112.3	113.3	110.6	119.9	108.9	111.7	126.3	112.2	105.0	127.8	138.2
September	118.0	97.4	97.6	113.3	113.4	111.8	119.4	108.9	113.4	120.9	112.1	104.1	132.4	137.0
December	117.1	97.2	97.7	115.1	113.0	113.2	118.5	110.3	113.0	117.4	112.8	104.2	132.6	133.7
<b>1997</b>														
March	117.6	97.8	98.1	115.2	115.6	113.2	119.6	110.1	112.4	116.9	113.8	104.2	130.7	138.8
June	119.4	100.8	98.3	116.3	117.6	112.3	123.1	109.9	111.4	117.3	115.2	104.1	132.1	141.3
September	121.3	104.3	98.7	117.2	117.7	111.9	123.8	109.2	113.0	117.6	115.4	103.1	131.8	144.7
December	122.4	104.4	98.8	116.5	117.7	113.9	124.2	110.3	114.0	118.1	115.8	99.1	133.4	149.8
<b>1998</b>														
March	126.8	108.4	98.4	118.7	117.7	112.5	124.6	111.0	113.5	122.4	116.2	102.1	134.0	149.8
June	128.7	112.3	98.9	118.9	117.2	112.1	124.2	112.4	112.8	122.5	117.1	101.9	135.2	149.5
September	130.8	112.9	98.6	118.6	117.7	112.5	123.0	111.9	112.8	122.5	117.1	102.0	137.4	149.5
December	130.9	113.7	97.7	118.6	117.3	112.2	123.1	114.0	113.3	123.9	117.1	102.6	142.1	130.0
<b>1999</b>														
March	128.7	116.0	97.2	119.2	117.3	112.4	122.7	114.0	113.4	124.6	117.1	101.2	143.8	131.0
June	128.5	119.2	96.7	120.2	117.3	112.4	121.7	114.3	113.8	125.9	117.0	101.2	143.8	131.0
September	130.4	118.2	96.0	120.5	115.0	109.4	116.7	114.3	112.5	133.3	117.0	100.8	144.4	131.7
MELBOURNE														
<b>1995-1996</b>	116.1	112.1	118.6	108.1	109.9	100.9	102.7	100.8	113.1	114.5	114.6	101.6	141.2	112.2
<b>1996-1997</b>	110.1	113.1	111.5	110.3	109.2	104.3	100.7	100.6	116.7	116.5	115.9	101.6	145.8	111.5
<b>1997-1998</b>	115.6	117.9	111.4	115.7	109.4	104.9	100.8	100.0	120.0	119.6	116.3	102.6	144.7	113.0
<b>1998-1999</b>	116.2	119.6	112.9	123.9	108.0	104.9	99.5	100.4	124.7	122.7	120.5	100.1	153.8	111.2
<b>1995</b>														
September	120.1	114.4	122.6	107.9	107.5	96.8	103.9	100.8	112.3	115.1	114.6	100.1	139.4	111.4
December	117.0	111.3	119.9	108.1	107.7	101.8	103.8	100.8	112.9	114.6	114.6	101.9	141.3	111.6
<b>1996</b>														
March	115.1	111.3	117.6	108.0	112.6	102.3	103.0	100.8	113.0	114.3	114.6	102.1	141.7	112.0
June	112.1	111.3	114.3	108.4	111.7	102.8	100.2	100.8	114.3	114.1	114.6	102.4	142.5	113.9
September	109.4	111.3	112.3	109.0	107.4	103.2	100.5	100.6	114.8	115.6	114.5	101.0	147.3	112.3
December	107.2	112.9	110.0	109.5	106.9	104.2	100.8	100.6	114.8	115.6	114.7	101.0	146.8	109.7
<b>1997</b>														
March	111.1	113.7	111.6	110.8	111.3	104.5	100.8	100.6	117.9	117.0	117.6	101.6	146.9	111.5
June	112.8	114.6	112.0	111.8	111.3	105.1	100.6	100.5	119.3	117.8	116.8	102.9	142.3	112.6
September	114.4	116.1	111.2	111.8	110.4	105.1	100.6	100.4	119.3	118.6	116.4	102.9	143.5	113.8
December	115.3	116.1	111.4	112.4	110.5	105.1	100.8	100.7	119.5	119.5	116.4	102.9	143.5	118.7
<b>1998</b>														
March	115.8	119.6	111.5	115.0	108.3	104.7	100.8	99.2	120.6	119.8	116.0	102.9	143.5	110.2
June	116.8	119.7	111.3	123.5	108.3	104.8	100.8	99.7	120.6	120.3	116.4	101.5	148.3	109.4
September	118.3	119.7	112.4	123.6	108.3	104.8	100.3	99.7	124.6	121.4	119.6	101.9	148.6	109.4
December	117.7	119.6	113.5	122.6	108.3	104.8	99.9	100.0	124.6	122.2	119.6	99.9	155.0	111.8
<b>1999</b>														
March	116.6	119.6	112.5	126.6	108.1	104.9	99.1	100.1	124.6	122.9	121.3	99.6	154.9	111.8
June	112.0	119.3	113.2	122.7	107.2	105.0	98.5	101.6	125.1	124.4	121.3	98.8	156.6	111.8
September	113.1	119.3	111.6	126.6	107.8	101.2	93.7	102.0	125.1	125.0	121.3	99.4	158.0	112.9

(a) Base of each index: 1989-90 = 100.0

## SELECTED MAJOR BUILDING MATERIALS, Index Numbers(a)—Brisbane and Adelaide

Period	Structural timber	Clay bricks	Ready mixed concrete	Precast concrete products	Steel decking and cladding	Structural steel	Reinforcing steel bar fabric and mesh	Aluminium windows	Fabricated steel products	Builders hardware	Sand and aggregate	Carpet	Paint and other coatings	Non-ferrous pipes and fittings
BRISBANE														
<b>1995-1996</b>	115.7	102.0	105.2	111.3	107.4	135.6	114.6	104.8	117.2	109.0	156.6	93.1	122.7	155.0
<b>1996-1997</b>	109.8	104.3	104.2	112.5	111.3	136.7	114.8	103.7	120.1	104.1	156.6	94.8	128.3	154.4
<b>1997-1998</b>	113.0	106.1	106.6	112.2	113.7	136.6	116.0	103.8	122.9	103.6	154.4	94.8	130.3	161.6
<b>1998-1999</b>	120.5	105.9	104.2	114.7	114.0	140.3	112.4	106.3	124.3	108.1	145.7	95.7	134.3	158.7
<b>1995</b>														
September	120.8	107.6	107.6	111.0	105.6	132.5	118.7	105.2	116.2	111.2	156.6	92.7	121.1	161.5
December	116.0	102.1	105.8	111.3	105.2	134.7	114.5	105.5	117.4	110.7	156.6	92.9	121.8	156.0
<b>1996</b>														
March	114.9	99.0	104.7	111.5	109.7	137.3	113.5	104.9	117.6	107.1	156.6	93.3	124.0	150.2
June	111.1	99.4	102.8	111.2	109.2	138.0	111.5	103.7	117.6	107.1	156.6	93.6	123.9	152.2
September	109.2	101.3	102.3	111.3	109.5	137.2	113.9	103.2	117.5	103.7	156.6	94.3	127.5	153.5
December	109.2	104.2	103.1	113.0	109.6	137.2	114.6	103.8	117.6	104.0	156.6	95.0	128.2	150.9
<b>1997</b>														
March	109.8	105.5	104.2	112.8	112.3	136.1	114.6	103.8	122.1	104.3	156.6	95.0	128.0	154.9
June	110.8	106.1	107.3	113.0	113.7	136.1	116.0	103.8	123.1	104.4	156.6	94.7	129.3	158.2
September	111.9	107.1	108.8	113.2	113.7	137.8	116.8	103.8	122.8	104.4	157.4	94.2	129.9	161.7
December	110.5	105.8	105.4	113.2	113.7	136.5	115.9	103.8	122.8	101.7	157.3	94.8	129.8	161.6
<b>1998</b>														
March	114.8	105.8	105.8	110.7	113.7	136.0	115.5	103.8	123.5	101.7	157.3	94.8	129.8	161.6
June	114.9	105.8	106.4	111.5	113.8	136.0	115.6	103.8	122.5	106.5	145.5	95.2	131.6	161.6
September	114.9	106.2	106.3	112.8	114.0	139.1	113.6	105.6	123.5	106.8	145.6	95.7	130.5	156.1
December	122.7	106.8	104.5	115.2	114.0	139.3	113.6	106.5	123.4	106.8	145.6	95.7	134.3	161.4
<b>1999</b>														
March	124.9	105.6	104.3	115.2	114.0	141.2	110.9	106.5	124.6	108.4	145.7	95.7	136.6	158.6
June	119.3	105.0	101.7	115.6	114.0	141.6	111.3	106.5	125.6	110.5	145.7	95.7	135.9	158.6
September	119.3	100.3	102.1	115.6	112.4	142.4	110.5	108.5	125.7	113.7	145.7	95.7	135.9	158.6
ADELAIDE														
<b>1995-1996</b>	148.4	120.1	104.3	120.2	114.1	108.9	108.7	115.6	112.0	120.2	114.8	106.1	115.7	126.2
<b>1996-1997</b>	148.6	117.5	110.5	120.1	118.2	113.0	113.0	116.8	112.3	122.5	116.7	111.2	126.3	122.6
<b>1997-1998</b>	154.4	117.8	113.9	122.1	120.2	114.5	114.1	119.6	113.0	122.2	120.1	113.5	121.3	125.4
<b>1998-1999</b>	166.6	119.5	110.5	123.1	121.1	114.6	108.9	122.1	113.3	125.3	119.5	113.3	125.1	120.1
<b>1995</b>														
September	149.5	120.1	106.7	119.9	111.2	108.0	107.3	115.3	112.0	120.1	114.5	105.3	113.6	130.0
December	148.4	120.4	103.6	120.0	111.8	108.7	109.1	115.3	111.9	120.1	114.5	106.2	114.7	125.9
<b>1996</b>														
March	148.1	119.9	103.4	120.4	116.7	109.0	109.1	115.7	111.9	120.1	114.8	106.1	115.6	124.2
June	147.5	119.9	103.5	120.5	116.7	109.7	109.1	115.9	112.3	120.5	115.4	106.6	118.8	124.6
September	147.5	119.6	103.0	120.4	116.7	109.7	111.0	116.5	112.3	122.3	115.4	108.3	123.0	122.6
December	148.4	118.1	111.7	119.3	116.7	113.0	113.7	116.5	112.3	122.5	115.2	110.6	128.2	120.3
<b>1997</b>														
March	148.9	115.6	113.1	119.5	118.7	114.6	113.7	116.5	112.3	122.5	116.4	112.4	127.7	123.1
June	149.6	116.5	114.1	121.1	120.5	114.6	113.7	117.6	112.2	122.5	119.7	113.5	126.3	124.4
September	152.5	116.5	115.0	121.2	120.5	114.6	113.7	117.6	112.1	122.5	120.6	113.5	125.6	126.8
December	149.5	118.4	115.1	121.8	120.1	114.5	113.7	118.8	113.2	122.5	120.6	113.5	122.9	128.0
<b>1998</b>														
March	157.8	118.4	112.9	122.7	120.1	114.5	113.7	119.4	113.2	121.8	119.2	113.5	114.9	124.6
June	157.7	117.9	112.6	122.7	120.1	114.5	115.2	122.4	113.3	121.8	120.0	113.5	121.9	122.2
September	162.7	118.1	111.1	123.1	121.3	114.5	110.8	122.4	113.3	124.9	120.2	113.5	123.9	120.9
December	162.7	120.1	110.8	123.1	121.2	114.5	109.1	122.4	113.3	124.9	120.2	113.5	124.0	120.3
<b>1999</b>														
March	170.6	119.5	110.1	123.1	120.7	114.6	109.1	122.4	113.3	124.9	120.2	113.2	125.9	119.6
June	170.3	120.3	109.8	123.1	121.0	114.6	106.7	121.0	113.1	126.6	117.4	113.1	126.5	119.6
September	170.3	120.0	109.1	122.2	121.0	114.6	102.3	121.9	113.3	128.4	117.4	113.1	126.7	120.7

(a) Base of each index: 1989-90 = 100.0

## SELECTED MAJOR BUILDING MATERIALS, Index Numbers(a)—Perth and Hobart

Period	Structural timber	Clay bricks	Ready mixed concrete	Precast concrete products	Steel decking and cladding	Structural steel	Reinforcing steel bar fabric and mesh	Aluminium windows	Fabricated steel products	Builders hardware	Sand and aggregate	Carpet	Paint and other coatings	Non-ferrous pipes and fittings
PERTH														
<b>1995-1996</b>	109.3	120.7	115.0	133.0	108.6	107.5	109.4	118.1	110.3	127.5	115.9	105.9	136.4	127.5
<b>1996-1997</b>	106.6	124.1	120.1	139.7	112.7	113.9	108.3	117.0	111.4	135.2	116.2	103.5	144.3	121.2
<b>1997-1998</b>	106.8	127.8	117.4	142.1	116.2	116.5	99.5	117.9	111.6	136.3	118.9	107.2	146.7	130.8
<b>1998-1999</b>	105.0	131.4	114.5	141.7	116.4	117.5	89.2	115.0	112.1	136.6	120.4	105.8	144.8	129.2
<b>1995</b>														
September	109.8	120.2	116.3	130.5	108.2	105.8	110.5	118.2	109.9	126.6	117.5	105.9	133.9	126.4
December	109.7	120.2	114.7	131.7	106.5	107.3	110.7	118.2	110.2	127.1	115.3	105.9	135.7	127.1
<b>1996</b>														
March	109.1	120.2	114.2	134.4	109.8	108.2	109.7	118.2	110.4	128.1	115.3	105.9	136.7	127.2
June	108.6	122.3	114.7	135.5	109.8	108.6	106.5	117.6	110.7	128.1	115.3	105.9	139.2	129.4
September	106.8	123.5	119.6	137.7	109.8	109.9	107.5	116.4	111.0	135.0	115.5	105.9	143.6	121.3
December	105.6	123.6	119.5	138.7	109.8	113.4	110.2	116.4	111.2	135.0	115.7	103.5	143.6	117.5
<b>1997</b>														
March	106.9	123.6	121.0	140.6	114.4	116.1	108.1	116.4	111.3	135.6	115.7	102.3	143.8	122.3
June	107.2	125.5	120.1	141.6	116.9	116.1	107.3	118.8	111.9	135.1	118.0	102.3	146.3	123.7
September	107.2	127.4	118.8	141.6	116.9	116.1	107.0	118.8	111.6	135.0	118.3	102.3	147.5	131.5
December	107.4	127.4	117.2	142.4	116.6	116.1	99.9	118.8	111.5	137.1	118.2	108.8	147.5	130.7
<b>1998</b>														
March	106.4	127.6	116.8	141.6	115.6	116.7	98.3	117.0	111.8	136.4	119.5	108.8	147.4	131.4
June	106.1	128.8	116.8	142.7	115.6	116.9	92.6	117.0	111.5	136.6	119.4	108.8	144.4	129.6
September	106.5	131.4	115.9	142.4	117.1	117.6	90.2	117.0	111.7	137.3	120.3	108.8	140.6	129.6
December	104.6	131.4	115.0	141.8	116.7	117.4	91.3	113.8	112.2	136.1	120.4	104.8	146.2	129.0
<b>1999</b>														
March	105.0	131.4	113.3	141.2	116.0	117.4	87.9	113.8	112.0	135.9	120.4	104.8	145.4	129.0
June	103.9	131.2	113.9	141.2	115.8	117.4	87.4	115.2	112.3	136.9	120.4	104.8	147.1	129.0
September	100.8	134.8	113.8	142.0	115.8	117.1	87.1	115.2	112.3	138.1	120.7	104.8	147.1	131.7
HOBART														
<b>1995-1996</b>	119.0	122.6	115.2	129.5	111.5	121.4	108.9	104.5	108.9	118.3	133.1	105.0	120.1	172.9
<b>1996-1997</b>	110.3	125.3	116.2	132.2	115.0	126.2	110.7	105.9	113.3	117.2	132.7	105.9	126.6	165.2
<b>1997-1998</b>	108.9	129.0	118.0	131.5	117.8	127.2	112.7	107.2	114.7	113.7	124.5	106.5	127.3	164.3
<b>1998-1999</b>	109.1	130.8	119.5	131.6	110.8	128.0	113.4	107.3	116.0	113.4	127.9	104.4	133.3	161.2
<b>1995</b>														
September	123.0	119.8	116.9	130.3	110.8	119.6	107.9	104.5	107.6	119.4	133.1	104.5	118.2	179.4
December	120.0	123.2	116.0	130.3	111.0	121.2	109.2	104.5	108.3	119.2	133.1	104.6	119.7	169.1
<b>1996</b>														
March	118.0	123.4	115.3	129.1	111.8	121.9	109.2	104.6	108.2	117.9	133.1	105.0	121.5	169.3
June	115.0	124.0	112.7	128.4	112.3	123.0	109.2	104.4	111.6	116.5	133.1	105.9	121.1	173.9
September	113.3	124.5	114.8	132.6	112.3	125.3	110.2	104.4	112.6	117.8	133.1	105.9	126.3	168.2
December	109.9	125.2	116.0	132.6	112.2	126.0	110.9	105.5	113.5	118.8	133.1	105.9	127.3	161.4
<b>1997</b>														
March	109.2	125.7	116.7	132.2	116.5	126.7	110.9	106.8	113.4	117.1	134.5	105.9	127.4	164.1
June	108.9	125.7	117.4	131.2	118.8	126.8	110.9	106.8	113.5	115.2	129.9	105.9	125.5	167.2
September	107.5	127.9	114.9	131.2	118.9	126.9	110.9	106.8	114.0	115.3	121.4	105.9	124.6	168.5
December	106.6	129.4	116.8	131.2	118.9	127.1	113.0	106.8	114.0	112.5	121.4	105.9	123.5	163.0
<b>1998</b>														
March	109.2	129.4	120.4	131.7	118.9	127.4	113.5	106.8	114.8	112.8	127.5	106.4	130.5	162.9
June	112.4	129.4	119.9	131.7	114.3	127.4	113.4	108.4	116.1	114.0	127.5	107.6	130.7	162.6
September	109.4	130.2	119.2	131.7	111.3	127.7	113.4	108.4	116.1	113.7	127.9	107.6	132.7	162.8
December	108.9	131.1	120.6	131.7	111.3	128.1	113.3	106.7	116.1	113.9	127.9	103.3	133.9	160.2
<b>1999</b>														
March	108.9	131.1	120.4	131.5	110.3	128.1	113.4	106.9	116.1	114.8	127.9	103.3	134.2	161.4
June	109.2	130.8	117.9	131.5	110.3	128.1	113.4	107.0	115.6	111.3	127.9	103.3	132.5	160.2
September	108.2	126.9	119.4	131.6	113.7	128.8	113.4	107.0	116.1	110.8	135.4	103.8	131.7	162.4

(a) Base of each index: 1989-90 = 100.0

## ELECTRICAL MATERIALS.....

Period	All groups excluding electrical materials and mechanical services	Conductors	Conduit and accessories	Switchboards and switchgear	Lamps and light fittings	All electrical materials	All electrical materials excluding lamps and light fittings
<b>1995-1996</b>	112.1	127.5	135.0	120.8	106.9	119.2	125.1
<b>1996-1997</b>	112.9	113.9	135.3	123.6	106.4	115.6	119.9
<b>1997-1998</b>	114.1	112.3	132.6	124.2	105.1	115.7	120.0
<b>1998-1999</b>	114.5	108.8	128.6	128.5	107.5	117.7	121.5
<b>1995</b>							
September	112.0	130.8	135.2	119.4	105.6	119.5	126.2
December	112.1	128.6	136.3	120.3	106.9	119.6	125.6
<b>1996</b>							
March	112.1	126.7	135.3	121.2	108.0	119.4	125.0
June	112.0	123.7	133.0	122.1	107.1	118.3	123.7
September	112.2	114.5	135.5	122.7	106.3	115.5	119.9
December	112.4	112.0	136.5	122.8	106.4	114.8	118.8
<b>1997</b>							
March	113.1	114.2	136.0	124.1	106.5	115.9	120.3
June	113.7	114.9	133.1	124.6	106.4	116.0	120.5
September	113.9	117.1	134.6	124.6	104.8	116.3	121.8
December	114.0	112.8	131.3	124.5	104.9	115.6	119.8
<b>1998</b>							
March	114.1	109.3	132.0	124.4	104.7	115.3	119.5
June	114.4	109.9	132.5	123.3	105.8	115.5	118.9
September	114.5	109.4	132.0	124.3	105.4	115.6	119.4
December	114.5	109.3	126.6	126.7	107.4	116.8	119.9
<b>1999</b>							
March	114.4	108.5	127.1	130.9	108.2	118.7	122.7
June	114.6	108.1	128.8	132.1	109.1	119.7	123.8
September	114.2	108.2	131.5	132.6	109.2	120.3	124.6

(a) Base of each index: 1989-90 = 100.0

Period	MECHANICAL SERVICES COMPONENTS.....				PLUMBING MATERIALS.....			
	Air conditioning	Fire protection	Elevators, escalators and travelators	All mechanical services	Hydraulic plumbing	Drainage	Roof plumbing	All plumbing materials
<b>1995-1996</b>	117.1	115.9	97.3	113.7	124.5	124.3	108.6	123.2
<b>1996-1997</b>	117.3	120.7	97.6	114.7	126.4	123.9	111.4	124.9
<b>1997-1998</b>	118.4	122.5	96.8	115.3	130.5	130.9	114.0	129.1
<b>1998-1999</b>	119.2	122.0	103.4	117.7	127.9	126.5	115.5	126.4
<b>1995</b>								
September	116.7	114.6	94.6	112.5	123.9	126.3	108.2	122.7
December	116.8	115.6	97.5	113.6	124.4	124.2	106.8	123.0
<b>1996</b>								
March	117.1	115.9	98.0	114.0	124.4	122.5	109.6	122.9
June	117.6	117.3	99.1	114.8	125.4	124.0	109.9	124.0
September	117.1	117.7	99.6	114.7	125.3	124.9	109.5	123.9
December	116.8	120.5	97.8	114.5	124.7	121.4	109.4	123.2
<b>1997</b>								
March	117.4	121.8	96.9	114.7	127.1	121.3	112.3	125.3
June	117.7	122.7	96.1	114.8	128.6	128.1	114.4	127.2
September	118.2	122.8	95.7	114.9	129.8	130.9	114.4	128.5
December	118.4	122.4	96.4	115.2	131.7	131.7	114.0	130.2
<b>1998</b>								
March	118.3	122.6	96.7	115.2	130.8	132.0	114.0	129.5
June	118.8	122.3	98.4	116.0	129.7	128.9	113.5	128.2
September	119.5	122.1	99.5	116.7	129.7	130.8	114.5	128.4
December	119.1	122.1	104.4	117.9	127.1	123.8	115.6	125.4
<b>1999</b>								
March	119.0	122.0	104.8	118.0	127.2	125.8	116.2	125.8
June	119.1	121.9	105.0	118.1	127.4	125.6	115.6	125.9
September	119.2	122.2	106.1	118.5	129.3	135.3	115.1	128.6

(a) Base of each index: 1989-90 = 100.0

## ELECTRICAL MATERIALS.....

Period	<i>All groups excluding electrical materials and mechanical services</i>	Conductors	Conduit and accessories	Switchboards and switchgear	Lamps and light fittings	All electrical materials	<i>All electrical materials excluding lamps and light fittings</i>
SYDNEY							
<b>1995-1996</b>	111.4	139.7	142.5	124.8	108.5	125.1	132.9
<b>1996-1997</b>	112.0	128.3	147.1	127.9	108.0	122.6	129.4
<b>1997-1998</b>	113.5	127.8	145.4	129.3	108.2	124.1	131.3
<b>1998-1999</b>	113.8	124.7	135.5	136.2	110.0	126.3	133.7
<b>1995</b>							
September	111.2	144.4	142.6	123.5	106.9	125.7	134.6
December	111.4	142.1	143.5	124.7	108.3	125.8	134.1
<b>1996</b>							
March	111.4	138.1	143.8	124.9	110.3	125.3	132.4
June	111.4	134.1	140.2	125.9	108.4	123.5	130.5
September	111.5	126.8	145.4	126.7	107.9	121.6	128.0
December	111.5	125.7	147.9	127.0	107.9	121.5	127.8
<b>1997</b>							
March	112.0	129.1	147.7	128.5	108.0	123.0	130.1
June	112.8	131.7	147.5	129.2	108.1	124.1	131.5
September	113.1	134.0	149.6	129.3	108.0	124.9	132.9
December	113.3	129.5	144.3	129.2	108.2	124.1	131.3
<b>1998</b>							
March	113.6	123.1	144.2	128.7	108.3	123.5	130.1
June	114.0	124.6	143.6	129.9	108.4	124.0	130.9
September	114.0	125.3	143.2	131.0	107.8	124.2	131.7
December	113.7	124.6	131.2	134.3	109.5	124.9	131.6
<b>1999</b>							
March	113.6	124.5	132.0	138.8	110.8	127.3	134.9
June	113.9	124.4	135.4	140.5	111.9	128.8	136.6
September	113.2	125.4	137.8	140.9	112.6	129.6	137.5
MELBOURNE							
<b>1995-1996</b>	109.7	139.6	129.0	116.1	100.8	119.4	128.7
<b>1996-1997</b>	110.0	116.3	120.9	118.0	101.1	112.0	117.6
<b>1997-1998</b>	111.0	111.7	114.7	117.7	97.3	109.8	115.7
<b>1998-1999</b>	112.3	108.4	115.7	119.4	101.9	112.4	116.6
<b>1995</b>							
September	109.5	142.3	130.6	114.4	98.7	119.3	129.5
December	109.8	140.4	131.8	115.5	101.4	119.9	129.2
<b>1996</b>							
March	109.8	140.1	129.3	117.2	101.9	120.3	129.5
June	109.6	135.5	124.3	117.1	101.3	118.2	126.7
September	109.5	119.4	123.4	117.2	101.2	113.0	119.0
December	109.4	115.7	123.4	117.1	101.2	111.8	117.2
<b>1997</b>							
March	110.2	116.4	122.3	118.6	101.5	112.5	118.1
June	110.7	113.7	114.5	118.9	100.5	110.8	116.0
September	110.6	115.9	115.4	119.0	96.8	110.4	117.2
December	110.9	111.3	114.0	118.6	96.8	109.8	116.1
<b>1998</b>							
March	110.9	109.6	114.0	120.0	97.1	110.3	116.8
June	111.5	110.1	115.5	113.1	98.6	108.6	112.5
September	112.0	108.6	115.5	113.4	98.6	108.6	112.5
December	112.3	108.7	115.6	116.7	102.8	111.8	114.8
<b>1999</b>							
March	112.2	108.4	115.6	123.4	102.7	114.3	119.3
June	112.5	107.8	116.2	124.1	103.3	114.8	119.8
September	112.0	106.8	118.2	124.7	104.5	115.8	120.5

(a) Base of each index: 1989-90 = 100.0

## MECHANICAL SERVICES COMPONENTS.....

## PLUMBING MATERIALS.....

<i>Period</i>	<i>Air conditioning</i>	<i>Fire protection</i>	<i>Elevators, escalators and travelators</i>	<i>All mechanical services</i>	<i>Hydraulic plumbing</i>	<i>Drainage</i>	<i>Roof plumbing</i>	<i>All plumbing materials</i>
SYDNEY								
<b>1995-1996</b>	117.8	114.9	96.1	113.9	135.1	125.2	103.3	129.1
<b>1996-1997</b>	117.7	123.3	95.7	115.0	139.2	125.3	102.0	132.6
<b>1997-1998</b>	120.1	126.5	95.3	116.6	145.7	132.2	104.5	138.6
<b>1998-1999</b>	120.0	125.7	101.4	118.3	139.1	125.5	107.8	132.5
<b>1995</b>								
September	117.7	113.8	94.7	113.2	133.7	126.1	106.8	128.1
December	117.7	114.6	96.2	113.8	134.9	125.0	101.7	128.8
<b>1996</b>								
March	117.6	114.9	96.3	113.9	135.1	123.4	102.8	129.0
June	118.0	116.3	97.2	114.5	136.6	126.3	101.9	130.5
September	117.0	117.4	97.4	114.2	137.1	128.0	100.6	131.0
December	116.9	123.9	95.7	114.7	136.1	120.7	100.5	129.5
<b>1997</b>								
March	118.0	125.6	95.1	115.4	140.7	121.6	102.7	133.6
June	118.7	126.1	94.5	115.6	142.9	130.8	104.2	136.3
September	119.0	126.4	94.2	115.7	144.3	134.2	104.5	137.7
December	119.9	126.5	94.8	116.3	147.1	134.5	104.5	140.0
<b>1998</b>								
March	120.1	126.6	95.2	116.6	146.6	133.2	104.5	139.5
June	121.2	126.3	96.9	117.7	144.7	126.8	104.6	137.1
September	121.7	125.9	97.9	118.3	144.4	131.4	106.2	137.5
December	119.7	125.9	102.2	118.3	136.5	121.3	108.3	129.9
<b>1999</b>								
March	119.4	125.5	102.6	118.3	137.5	124.6	108.3	131.1
June	119.3	125.5	102.8	118.3	138.0	124.7	108.3	131.5
September	119.4	125.2	104.0	118.6	140.0	133.7	107.5	134.3
MELBOURNE								
<b>1995-1996</b>	118.0	111.3	98.5	114.1	116.7	125.7	114.7	118.9
<b>1996-1997</b>	118.1	112.4	100.4	115.0	117.6	127.4	122.0	120.1
<b>1997-1998</b>	118.4	113.2	99.0	114.9	119.6	135.4	125.3	122.8
<b>1998-1999</b>	120.5	113.1	105.9	118.2	119.9	133.2	126.7	122.8
<b>1995</b>								
September	117.2	110.5	94.1	112.2	115.3	126.1	110.9	117.6
December	117.6	111.5	98.6	113.9	116.6	124.4	113.1	118.7
<b>1996</b>								
March	118.1	111.5	99.7	114.6	117.0	124.3	116.3	119.1
June	118.9	111.5	101.6	115.6	117.8	127.9	118.6	120.2
September	118.1	111.5	102.9	115.6	117.4	127.7	118.7	119.9
December	117.9	111.7	100.7	114.9	117.4	126.9	118.7	119.8
<b>1997</b>								
March	118.0	112.0	99.6	114.6	117.3	125.0	124.0	119.7
June	118.2	114.4	98.2	114.7	118.1	130.0	126.7	120.9
September	118.8	114.4	97.7	114.8	118.7	132.3	125.7	121.6
December	118.5	112.8	98.8	114.8	121.5	135.1	125.1	124.3
<b>1998</b>								
March	118.1	112.8	98.8	114.6	119.4	136.7	125.1	122.8
June	118.1	112.8	100.7	115.2	118.7	137.6	125.1	122.3
September	119.4	112.8	101.5	116.2	119.6	137.7	125.1	123.0
December	120.4	112.8	107.0	118.4	120.4	131.2	125.5	123.0
<b>1999</b>								
March	120.9	113.3	107.5	118.9	119.8	132.3	129.4	122.7
June	121.2	113.3	107.7	119.2	119.7	131.7	126.6	122.5
September	121.4	113.4	108.8	119.6	121.7	144.2	127.0	125.7

(a) Base of each index: 1989-90 = 100.0



## ELECTRICAL MATERIALS.....

Period	All groups excluding electrical materials and mechanical services	Conductors	Conduit and accessories	Switchboards and switchgear	Lamps and light fittings	All electrical materials	All electrical materials excluding lamps and light fittings
BRISBANE							
<b>1995-1996</b>	116.6	106.6	120.1	123.3	106.3	110.7	113.8
<b>1996-1997</b>	117.6	98.5	126.5	126.8	106.7	109.7	112.2
<b>1997-1998</b>	119.2	99.2	127.6	129.5	106.4	111.7	115.3
<b>1998-1999</b>	119.9	93.9	123.6	134.8	112.0	115.3	117.3
<b>1995</b>							
September	117.1	109.4	119.2	122.7	106.3	111.3	114.8
December	116.6	106.2	122.0	121.8	106.4	110.4	113.3
<b>1996</b>							
March	116.5	105.9	118.1	123.7	106.3	110.4	113.4
June	116.3	104.9	120.9	124.9	106.1	110.6	113.8
September	116.6	98.7	125.4	125.7	106.2	109.2	111.7
December	117.1	96.8	127.6	125.6	106.4	108.9	111.1
<b>1997</b>							
March	117.8	98.5	127.2	127.6	107.0	110.0	112.6
June	118.8	99.9	125.8	128.4	107.1	110.6	113.4
September	119.6	103.0	127.3	128.5	105.5	111.2	115.1
December	118.9	100.9	127.3	128.5	105.4	111.0	114.8
<b>1998</b>							
March	118.9	96.9	127.3	129.8	106.2	111.6	115.2
June	119.2	96.1	128.6	131.1	108.3	113.0	116.1
September	119.6	95.5	125.4	134.2	109.0	114.0	117.4
December	120.1	97.7	121.2	132.8	111.9	114.5	116.1
<b>1999</b>							
March	120.0	91.3	123.8	136.0	113.4	116.1	117.8
June	119.9	91.1	124.0	136.3	113.7	116.4	118.0
September	120.2	91.1	131.3	136.8	112.2	116.6	119.5
ADELAIDE							
<b>1995-1996</b>	112.8	94.0	131.5	120.5	109.7	109.3	108.9
<b>1996-1997</b>	115.1	84.0	127.3	125.7	110.3	107.5	106.0
<b>1997-1998</b>	116.6	81.7	127.0	126.3	109.1	107.9	107.2
<b>1998-1999</b>	116.3	80.3	131.1	130.0	110.8	110.3	110.0
<b>1995</b>							
September	112.8	96.1	131.9	118.0	109.7	109.3	109.0
December	112.6	93.8	132.2	119.5	109.7	109.0	108.5
<b>1996</b>							
March	112.9	92.8	131.6	120.6	109.7	109.0	108.5
June	112.9	93.1	130.1	123.7	109.7	109.8	109.7
September	113.3	87.6	130.1	125.5	109.7	108.6	107.9
December	115.2	80.7	127.8	125.7	110.2	106.5	104.5
<b>1997</b>							
March	115.7	82.9	126.9	125.7	110.6	107.2	105.4
June	116.1	84.8	124.2	125.8	110.6	107.7	106.0
September	116.2	87.1	124.7	125.7	108.9	107.8	107.1
December	116.6	79.2	124.6	125.7	108.9	107.3	106.2
<b>1998</b>							
March	116.4	79.9	127.5	126.3	108.5	107.6	107.1
June	117.0	80.4	131.1	127.3	110.0	109.0	108.4
September	116.4	80.5	131.1	128.8	110.0	109.5	109.3
December	116.3	80.4	130.9	129.0	110.0	109.6	109.4
<b>1999</b>							
March	116.3	80.3	130.9	129.8	110.1	109.9	109.8
June	116.2	80.0	131.4	132.3	113.2	112.1	111.4
September	115.7	78.6	132.9	132.7	111.3	111.5	111.7

(a) Base of each index: 1989-90 = 100.0

MECHANICAL SERVICES COMPONENTS.....

PLUMBING MATERIALS.....

<i>Period</i>	<i>Air conditioning</i>	<i>Fire protection</i>	<i>Elevators, escalators and travelators</i>	<i>All mechanical services</i>	<i>Hydraulic plumbing</i>	<i>Drainage</i>	<i>Roof plumbing</i>	<i>All plumbing materials</i>
BRISBANE								
<b>1995-1996</b>	113.6	119.0	99.5	112.3	126.5	125.7	101.5	122.7
<b>1996-1997</b>	116.1	120.7	99.4	113.9	126.7	127.1	105.6	123.1
<b>1997-1998</b>	117.1	121.0	98.3	114.1	129.5	130.4	106.1	125.7
<b>1998-1999</b>	118.4	121.0	103.7	116.4	130.9	126.6	103.0	126.3
<b>1995</b>								
September	113.3	117.3	98.0	111.4	129.5	129.0	99.2	125.4
December	113.0	119.6	99.6	112.0	127.5	125.5	99.2	123.5
<b>1996</b>								
March	113.7	119.6	99.8	112.5	124.2	124.0	103.7	120.7
June	114.5	119.6	100.4	113.2	124.9	124.2	103.7	121.3
September	115.5	120.1	100.8	113.9	125.4	125.3	103.9	121.8
December	115.9	120.5	99.5	113.8	125.6	126.6	104.0	122.1
<b>1997</b>								
March	116.3	121.0	98.9	113.9	127.1	126.9	106.6	123.5
June	116.8	121.0	98.2	113.9	128.5	129.5	107.9	125.0
September	117.6	121.0	97.7	114.2	130.2	131.9	107.5	126.6
December	116.9	121.0	98.3	114.0	129.4	130.1	107.5	125.6
<b>1998</b>								
March	116.7	121.0	98.1	113.8	129.2	131.2	107.3	125.6
June	117.0	121.0	99.2	114.3	129.2	128.4	102.2	125.1
September	117.0	121.0	99.9	114.5	127.8	128.5	103.0	124.0
December	119.0	121.0	104.5	117.0	132.4	126.3	103.0	127.5
<b>1999</b>								
March	118.6	121.0	105.1	116.9	131.6	125.5	103.0	126.8
June	118.8	121.0	105.3	117.1	131.7	125.9	102.9	126.9
September	118.9	121.0	106.4	117.5	133.4	135.9	103.9	129.5
ADELAIDE								
<b>1995-1996</b>	118.7	126.3	90.8	115.0	115.8	113.8	111.8	115.7
<b>1996-1997</b>	118.2	127.3	90.2	114.6	116.2	109.5	114.8	115.9
<b>1997-1998</b>	118.6	127.3	89.6	114.7	117.9	120.6	114.8	118.4
<b>1998-1999</b>	120.1	123.3	95.8	116.8	115.7	121.7	113.4	116.6
<b>1995</b>								
September	118.7	125.8	88.0	114.0	116.4	119.4	109.6	116.6
December	118.4	126.0	91.1	114.9	115.1	114.5	109.2	115.0
<b>1996</b>								
March	118.6	126.3	91.6	115.1	115.3	111.6	114.1	115.2
June	119.2	127.0	92.4	115.9	116.4	109.7	114.1	116.0
September	119.1	127.2	92.3	115.8	116.0	107.6	114.1	115.5
December	118.0	127.2	90.3	114.5	115.5	106.8	114.1	115.0
<b>1997</b>								
March	118.2	127.2	89.4	114.4	116.3	108.6	114.9	115.9
June	117.6	127.4	88.7	113.8	117.0	114.9	116.1	117.1
September	118.1	127.5	88.4	114.1	118.1	116.9	116.1	118.1
December	118.6	127.5	88.9	114.5	118.5	118.3	114.3	118.7
<b>1998</b>								
March	118.4	128.8	89.4	114.7	117.6	123.9	114.3	118.5
June	119.4	125.2	91.5	115.4	117.2	123.3	114.3	118.1
September	119.8	123.5	91.8	115.4	116.3	122.3	114.9	117.2
December	120.4	123.5	96.7	117.3	116.5	121.3	115.8	117.3
<b>1999</b>								
March	120.2	123.5	97.2	117.3	115.0	121.3	110.9	115.9
June	120.0	122.8	97.6	117.2	115.0	122.0	111.9	116.0
September	119.5	122.8	98.3	117.1	116.4	129.1	111.9	118.0

(a) Base of each index: 1989-90 = 100.0

## ELECTRICAL MATERIALS.....

Period	<i>All groups excluding electrical materials and mechanical services</i>	Conductors	Conduit and accessories	Switchboards and switchgear	Lamps and light fittings	All electrical materials	<i>All electrical materials excluding lamps and light fittings</i>
PERTH							
<b>1995-1996</b>	113.4	108.2	142.2	116.0	112.0	113.0	114.2
<b>1996-1997</b>	115.3	102.2	147.3	117.2	108.1	110.6	112.5
<b>1997-1998</b>	115.3	102.4	144.2	115.5	105.3	109.3	111.9
<b>1998-1999</b>	114.1	95.9	144.1	115.4	102.8	107.8	111.0
<b>1995</b>							
September	113.5	109.8	139.7	115.6	111.3	113.0	114.4
December	113.4	107.8	141.1	115.6	111.8	112.7	113.7
<b>1996</b>							
March	113.5	107.4	141.8	115.8	111.8	112.6	113.7
June	113.2	107.8	146.3	116.8	113.1	113.8	114.8
September	114.3	102.7	147.7	116.9	108.9	111.0	112.7
December	114.9	99.9	147.9	117.1	107.4	109.7	111.5
<b>1997</b>							
March	115.7	102.3	148.0	117.2	108.0	110.7	112.7
June	116.1	103.8	145.4	117.5	108.0	111.0	113.2
September	116.1	105.2	146.8	117.5	106.4	111.0	113.9
December	115.6	101.9	140.7	117.0	106.4	109.9	112.1
<b>1998</b>							
March	115.0	101.9	144.8	113.1	102.3	107.2	110.4
June	114.6	100.6	144.6	114.4	106.1	109.2	111.0
September	114.5	97.1	144.5	114.5	103.7	107.9	110.6
December	114.1	96.3	143.9	114.9	102.5	107.4	110.7
<b>1999</b>							
March	113.7	95.8	143.8	116.0	102.8	107.9	111.3
June	114.0	94.2	144.2	116.3	102.3	107.8	111.4
September	114.2	94.6	146.4	116.6	100.8	107.5	112.0
HOBART							
<b>1995-1996</b>	115.5	126.9	136.6	125.3	97.1	118.6	129.2
<b>1996-1997</b>	116.8	121.9	135.8	128.5	95.7	117.4	128.1
<b>1997-1998</b>	118.0	122.5	138.4	128.1	96.7	117.2	127.6
<b>1998-1999</b>	118.8	124.2	132.9	130.0	93.3	115.8	128.0
<b>1995</b>							
September	115.3	127.4	139.6	124.1	96.7	118.6	129.3
December	115.7	127.1	140.6	124.5	96.7	118.6	129.5
<b>1996</b>							
March	115.6	126.4	134.6	124.3	97.2	118.1	128.4
June	115.3	126.5	131.5	128.1	97.7	119.1	129.6
September	116.3	123.8	134.0	128.7	89.0	115.7	128.9
December	116.5	122.4	134.8	128.7	97.9	118.3	128.3
<b>1997</b>							
March	117.0	121.8	135.2	128.7	97.9	118.1	128.0
June	117.3	119.7	139.3	127.8	97.9	117.5	127.2
September	117.1	119.7	139.7	127.9	97.8	117.6	127.3
December	117.7	123.1	139.4	127.9	97.9	117.8	127.7
<b>1998</b>							
March	118.2	123.1	139.4	128.4	95.4	116.9	128.0
June	118.9	124.1	135.0	128.2	95.6	116.5	127.2
September	119.1	122.6	132.1	128.6	95.5	116.1	126.7
December	119.0	124.5	132.9	134.1	91.9	116.8	130.8
<b>1999</b>							
March	118.8	124.5	132.9	128.4	93.2	115.2	127.0
June	118.4	125.1	133.8	128.8	92.5	115.2	127.5
September	118.8	125.1	137.4	129.2	92.7	115.9	128.5

(a) Base of each index: 1989-90 = 100.0

## MECHANICAL SERVICES COMPONENTS.....

## PLUMBING MATERIALS.....

<i>Period</i>	<i>Air conditioning</i>	<i>Fire protection</i>	<i>Elevators, escalators and travelators</i>	<i>All mechanical services</i>	<i>Hydraulic plumbing</i>	<i>Drainage</i>	<i>Roof plumbing</i>	<i>All plumbing materials</i>
PERTH								
<b>1995-1996</b>	114.1	120.0	100.1	112.3	114.0	126.0	116.6	120.1
<b>1996-1997</b>	114.0	126.6	99.9	113.3	113.4	119.8	121.4	119.2
<b>1997-1998</b>	114.1	128.5	99.0	113.4	118.5	125.2	126.6	124.6
<b>1998-1999</b>	113.6	130.5	108.5	116.1	118.8	120.0	128.8	124.3
<b>1995</b>								
September	113.2	116.1	95.8	109.8	113.8	134.1	113.3	120.4
December	113.6	117.8	100.9	112.0	113.9	129.4	113.7	120.2
<b>1996</b>								
March	114.4	119.6	101.5	112.9	113.8	123.5	119.6	119.9
June	115.0	126.4	102.2	114.5	114.3	116.8	119.7	119.9
September	114.4	125.1	102.1	114.0	111.6	119.3	119.7	117.5
December	114.0	124.4	100.1	113.0	112.0	119.1	119.7	117.8
<b>1997</b>								
March	113.8	128.4	99.2	113.2	114.2	118.0	120.8	119.9
June	113.8	128.4	98.1	112.9	115.6	122.7	125.3	121.6
September	114.4	128.4	97.8	113.1	118.5	126.0	126.8	124.7
December	114.5	127.7	98.3	113.3	118.8	126.1	126.8	124.9
<b>1998</b>								
March	114.1	128.1	98.7	113.2	118.5	125.3	126.4	124.6
June	113.4	129.8	101.1	113.8	118.2	123.5	126.4	124.1
September	113.8	130.8	103.9	115.0	118.3	121.2	128.6	124.0
December	113.7	130.8	109.7	116.6	118.7	118.4	128.6	124.0
<b>1999</b>								
March	113.2	130.1	110.2	116.3	119.2	121.3	128.6	124.8
June	113.5	130.1	110.3	116.5	119.1	119.1	129.3	124.5
September	113.5	134.4	111.1	117.4	121.8	126.1	125.8	127.6
HOBART								
<b>1995-1996</b>	117.1	122.2	103.0	115.1	133.1	107.5	119.2	127.7
<b>1996-1997</b>	119.6	123.0	104.3	117.0	127.3	104.9	126.7	122.8
<b>1997-1998</b>	120.8	124.8	101.6	117.0	126.7	101.0	127.9	121.9
<b>1998-1999</b>	121.6	125.9	106.2	119.0	130.0	101.4	122.8	124.5
<b>1995</b>								
September	116.7	122.1	99.6	113.8	134.3	108.4	117.5	128.7
December	116.3	122.1	104.0	114.9	132.7	108.7	118.0	127.4
<b>1996</b>								
March	117.1	122.1	103.8	115.3	132.8	108.7	119.6	127.6
June	118.3	122.5	104.4	116.2	132.4	104.1	121.6	127.0
September	119.0	122.7	106.1	117.1	131.1	107.9	127.0	126.3
December	119.0	122.7	104.9	116.8	125.2	103.6	124.7	120.8
<b>1997</b>								
March	119.6	123.3	103.5	116.8	125.8	103.8	125.7	121.4
June	120.8	123.3	102.6	117.1	127.0	104.1	129.2	122.5
September	121.0	123.3	100.8	116.6	127.2	104.1	130.5	122.8
December	120.5	124.4	101.8	116.8	126.6	102.3	129.6	122.0
<b>1998</b>								
March	121.1	125.7	101.9	117.4	126.6	99.1	129.6	121.6
June	120.5	125.9	101.9	117.1	126.3	98.5	121.9	121.0
September	121.4	125.9	102.5	117.8	130.3	101.8	125.8	124.9
December	121.6	125.9	106.7	119.1	129.5	101.3	122.4	124.1
<b>1999</b>								
March	121.6	125.9	107.6	119.4	130.0	101.2	121.1	124.4
June	121.7	125.9	107.8	119.5	130.1	101.2	121.7	124.5
September	120.7	125.9	109.1	119.3	126.9	105.4	120.9	122.3

(a) Base of each index: 1989-90 = 100.0

## EXPLANATORY NOTES

- INTRODUCTION **1** This publication presents index numbers measuring changes in prices of selected materials used in the construction of buildings other than houses—the *Price Index of Materials Used in Building Other than House Building*. It is calculated on the reference base 1989–90 = 100.0 for the six State capital cities.
- SCOPE **2** The index includes 63 items which are combined into 10 industry of origin groups and an ‘All groups’ total. Table 1 presents ‘All groups’ index numbers for the weighted average of the six State capital cities, for each of the cities separately. Although many of the selected materials are also used in house building, in building repair, maintenance and alteration work and in engineering construction work (e.g. projects such as roads, dams, bridges and the like), the weighting pattern of the index is not applicable to these other activities of the construction industry. In addition, since the weights are based on an average materials usage over a range of types of building within the defined area (building other than house building), the index is not necessarily applicable to any specific building or type of building.
- CLASSIFICATION **3** For the weighted average of the six State capital cities the selected materials have been combined into broad groups on an industry of origin basis. Table 4 presents index numbers for groups defined in terms of the Groups (3 digit level) of the 1993 *Australian and New Zealand Standard Industrial Classification* (ANZSIC); the percentage contributions for individual materials and groups are shown in table A1 of the Appendix of the October 1993 issue of this publication. The ‘industry of origin’ is not necessarily identical to the industry which supplies the materials to builders. The ‘industry of origin’ is the industry in which the material is *primarily produced*, determined in accordance with the classification rules of the ANZSIC. For instance, many of the materials are classified to the appropriate producing industries, rather than the wholesale trading industries. Some materials used in constructing buildings in Australia are imported. Imported materials are allocated to the similar industry of origin as Australian produced materials.
- ITEMS AND WEIGHTS **4** The index is a fixed weights index. The items were selected and allocated weights in accordance with the estimated average values of materials used in the construction of buildings other than houses completed in each of the seven capital cities in the five years ended June 1992. This same weighting pattern is used for each of the six capital cities. The weighting pattern for the ‘All groups’ index is set out in Appendix A of the October 1993 issue of this publication.
- PRICE MEASUREMENT **5** Prices relate to specific standards of each material and are obtained from representative suppliers of materials used in building. In general, the point of pricing is ‘delivered on site’ but in some cases it has been necessary to use the nearest realistic price available e.g. ‘delivered to electrical contractor’s store’. Local prices are used in the indexes for each capital city.
- 6** As far as possible, actual transactions prices are used in this index—that is, prices actually paid by building contractors or subcontractors to suppliers for materials delivered on building sites. The actual price paid for anything can be described in various ways. Instead of being described as a single price (as usually happens in retail shops) a price for a building material may be described in terms of the components which make up the price—for instance ‘list price plus sales tax’, ‘suppliers price plus freight’, ‘basic price less (particular types of) discount’ and so on. It is these *net* prices that buyers pay to sellers for materials that the ABS aims to use in compiling this index.

## EXPLANATORY NOTES

### PRICE MEASUREMENT *continued*

**7** The ABS asks respondent businesses to report details of the discounts they offer so that actual transaction prices can be calculated. However, as building material suppliers offer many different types of discounts to buyers (e.g. trade discounts, settlement discounts, quantity discounts, competitive discounts), the identification of the discounts and the way in which they are applied by sellers pose considerable problems for the ABS. To the extent that discounts are identified and measured, their effects are taken into account in calculating the index. Sometimes new discounts, or changes in the way discounts are applied by sellers, are identified only after index numbers for a particular period have been published. In such cases, or in any other case where it is discovered that incorrect prices have been used in compiling the indexes, revisions to index numbers may occur in subsequent issues of this publication.

**8** To minimise the incidence of revisions, the ABS has stringent procedures to verify that prices reported in its mail collections are transactions prices net of discounts.

**9** Sales taxes levied on building materials are included in the prices used to compile the index. Materials used in the construction of Commonwealth, State and Local Government owned buildings are exempt from sales tax; materials used in most non-government 'health' and 'education' buildings and buildings for non-profit organisations such as religious and charitable institutions are also exempt. At any particular time, when there is a change in the rate of sales tax on building materials, the movement in the index takes into account the proportion of materials sold subject to sales tax and the proportion of materials exempt from sales tax.

**10** On request, the ABS can provide further information on the treatment of sales tax in the index including details of factors to either include the full effects of sales tax changes or exclude entirely the effects of sales tax changes.

### INDEX NUMBERS

**11** Index numbers for financial years are averages of quarterly index numbers.

#### SELECTED MATERIALS

**12** Table 5 contains index numbers for selected materials used in constructing buildings other than houses for the weighted average of the six State capital cities. In general these indexes relate to either single items or combinations of items as shown in the weighting pattern published in table A1 of the Appendix to the October 1993 issue of this publication. Tables 6 to 9 contain index numbers for selected major materials for each State capital city.

#### SPECIAL COMBINATIONS OF MATERIALS

**13** Tables 10 to 12 contain index numbers for the following special combinations of materials, for the weighted average of the six State capital cities and each State capital city:

- All groups excluding electrical materials and mechanical service components
- Electrical materials
- Mechanical services components
- Plumbing materials

### REVISIONS

**14** In cases where more complete information is obtained after index numbers for a period have been published, or it is discovered that incorrect prices have been used in compiling the indexes, revisions to index numbers may occur in subsequent issues of this publication.

### ANALYSIS OF INDEX CHANGES

**15** Care should be exercised when interpreting quarter-to-quarter movements in the indexes as short-term movements do not necessarily indicate changes in trend.

**16** The separate city indexes measure price movements over time in each capital city individually. They do not measure differences in price levels between cities.

## EXPLANATORY NOTES

### ANALYSIS OF INDEX CHANGES *continued*

**17** Movements in indexes from one period to another can be expressed either as changes in 'index points' or as percentage changes. The following example illustrates the method of calculating index points changes and percentage changes between any two periods:

Weighted average of six State capital cities index numbers —	
September Quarter 1999	115.2 (see Table 1)
less September Quarter 1998	114.8 (see Table 1)
Change in index points	0.4
Percentage change	$\frac{0.4}{114.8} \times 100 = 0.3$

**18** Table 3 provides an analysis of the contribution which selected major building materials make to the All groups index for the weighted average of the six State capital cities. For example, Ready mixed concrete contributed 9.94 index points to the All groups index number of 115.2 for September Quarter 1999 and -0.07 index points to the net change of -0.2 index points.

### FURTHER INFORMATION

**19** Further information on the index is presented in the publication *Producer and Foreign Trade Price Indexes: Concepts, Sources and Methods* (Cat. no. 6419.0).

### RELATED PUBLICATIONS

**20** Users may also wish to refer to the following price index publications which are available from ABS Bookshops:

- *Price Index of Materials Used in House Building, Six State Capital Cities* (Cat. no. 6408.0)
- *Price Indexes of Materials Used in Manufacturing Industries, Australia* (Cat. no. 6411.0)
- *Price Indexes of Articles Produced by Manufacturing Industry, Australia* (Cat. no. 6412.0)
- *Price Indexes of Copper Materials, Australia* (Cat. no. 6410.0).

**21** Other ABS publications that may be of interest include:

- *Average Weekly Earnings, States and Australia* (Cat. no. 6302.0).

### UNPUBLISHED STATISTICS

**22** Current publications produced by the ABS are listed in the *Catalogue of Publications and Products, Australia* (Cat. no. 1101.0). The ABS also issues, on Tuesdays and Fridays, a *Release Advice* (Cat. no. 1105.0) which lists publications to be released in the next few days. The Catalogue and Release Advice are available from any ABS office.

**23** As well as the statistics included in this and related publications, the ABS may have other relevant unpublished data available. Inquiries should be made to Robert Adams on 02 6252 6198 or to any ABS office.

### SYMBOLS AND OTHER USAGES

ANZSIC Australian and New Zealand Standard Industrial Classification  
r figure or series revised since previous issue

## SELF-HELP ACCESS TO STATISTICS

- CPI INFOLINE* For current and historical Consumer Price Index data, call 1902 981 074 (call cost 75c per minute).
- DIAL-A-STATISTIC* For the latest figures for National Accounts, Balance of Payments, Labour Force, Average Weekly Earnings, Estimated Resident Population and the Consumer Price Index call 1900 986 400 (call cost 75c per minute).
- INTERNET* [www.abs.gov.au](http://www.abs.gov.au)
- LIBRARY* A range of ABS publications is available from public and tertiary libraries Australia-wide. Contact your nearest library to determine whether it has the ABS statistics you require.

## WHY NOT SUBSCRIBE?

- PHONE* +61 1300 366 323
- FAX* +61 03 9615 7848

## CONSULTANCY SERVICES

ABS offers consultancy services on a user pays basis to help you access published and unpublished data. Data that is already published and can be provided within 5 minutes is free of charge. Statistical methodological services are also available. Please contact:

<i>INQUIRIES</i>	<i>City</i>	<i>By phone</i>	<i>By fax</i>
	Canberra	02 6252 6627	02 6207 0282
	Sydney	02 9268 4611	02 9268 4668
	Melbourne	03 9615 7755	03 9615 7798
	Brisbane	07 3222 6351	07 3222 6283
	Perth	08 9360 5140	08 9360 5955
	Adelaide	08 8237 7400	08 8237 7566
	Hobart	03 6222 5800	03 6222 5995
	Darwin	08 8943 2111	08 8981 1218

*POST* Client Services, ABS, PO Box 10, Belconnen ACT 2616

*EMAIL* [client.services@abs.gov.au](mailto:client.services@abs.gov.au)



2640700009996  
ISSN 1325-2151

RRP \$16.50